



# VILLAGE ESTATES



• EST.1993 •

93 Main Road, Sidcup, Kent DA14 6ND

Tel: 0208 302 1002

www.village-estates.com

Email: sidcup@village-estates.com



**10 YEAR NHBC BUILD  
WARRANTY**  
**HIGH STREET LOCATION**  
**250 YEAR LEASE**

**LIFT TO ALL FLOORS**  
**PRIVATE BALCONY**  
**VIDEO DOOR ENTRY SYSTEM**



SIDCUP  
**STORYTELLER**

VILLAGE  
ESTATES  
EST. 1993



**Storyteller Court, Elm Road,  
Sidcup, DA14 6AE**

**£390,000**

Introducing a stunning collection of brand new one and two bedroom apartments situated just a stone's throw away from Sidcup High Street. These immaculately presented properties offer contemporary and stylish living spaces designed to cater to modern living requirements. Boasting well-proportioned rooms throughout, these apartments offer the perfect blend of comfort and functionality. Each apartment has been thoughtfully designed to maximize natural light and provide ample living space, making them ideal for both relaxing and entertaining. One of the standout features of these apartments is the high quality of fixtures and fittings. The stylish kitchen and bathrooms have been finished to the highest standard and are sure to impress even the most discerning of buyers. Each apartment also comes with a private balcony, providing a tranquil space to enjoy the outdoors.

**EPC RATING:** TBC

**COUNCIL TAX BAND:** TBC

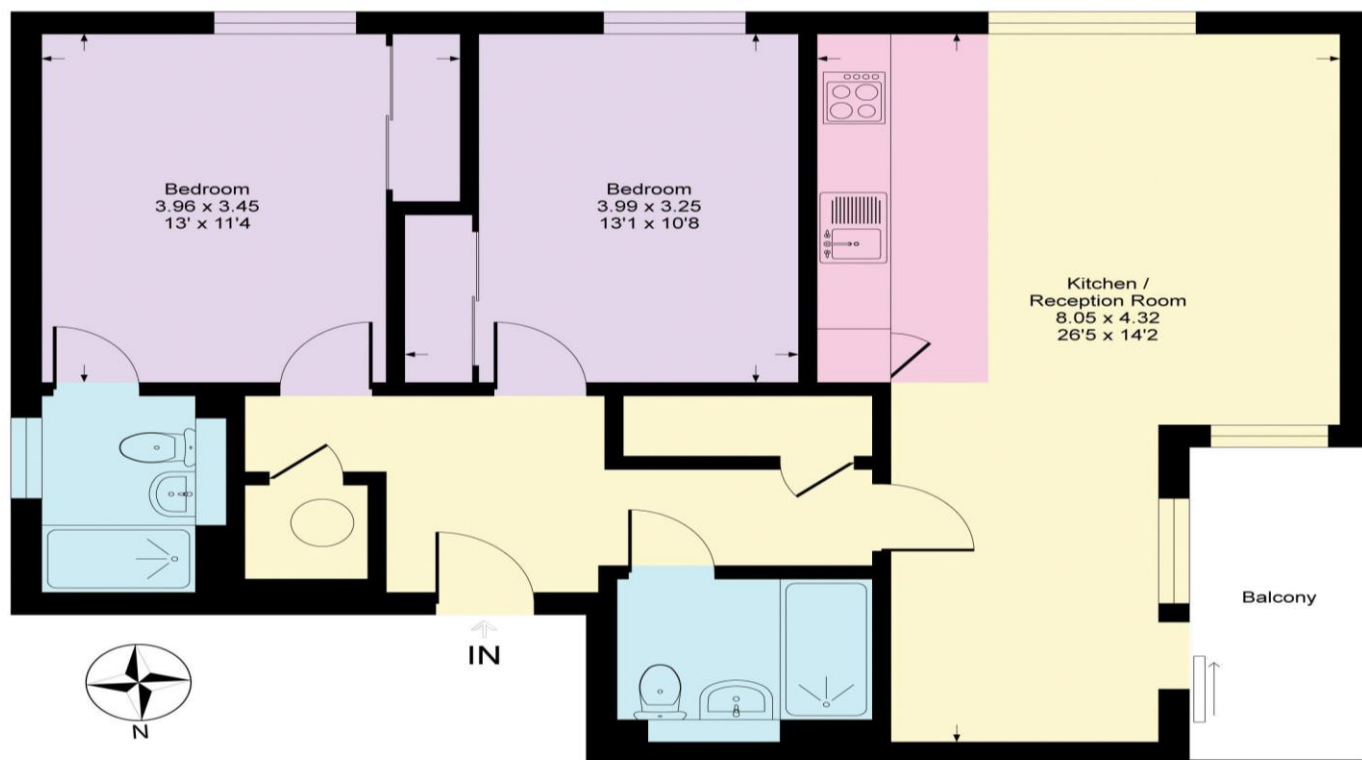
**TENURE:** Leasehold

**LEASE TERM:** New 250 year lease



**Sidcup High Street, DA14**

Approximate Gross Internal Area = 72 sq m / 784 sq ft



**CONSUMER PROTECTION FROM UNFAIR TRADING REGULATIONS 2008**

Please note that any services, heating system or appliances have not been tested, and no warranty can be given or implied as to their working order. You are advised to obtain verification from your solicitor or surveyor. References to the tenure of a property are based on information supplied by the seller. We have not had sight of the title documents and a buyer is advised to obtain verification from their solicitor. Items shown in photographs are not included unless specifically mentioned within the sales particulars, but may be available by separate negotiation. Whilst every attempt has been made to ensure the accuracy of the floor plan contained here, measurements of doors, windows, rooms and any other items are approximate and no responsibility is taken for any error, omission, or mis-statement. We advise you to book an appointment to view before embarking on any journey to see a property, and check its availability. The accuracy of these details are not guaranteed and they do not form part of the contract.